
RemoteApps and Remote Desktop in Windows 10



IT Operations
Titus Salt School
April 2016

Background

With the release of Windows 10, Microsoft updated the default web browser to Edge which is not compatible with their own Remote Desktop Solution – the one we use at school to enable staff and students to work from remote locations.

Microsoft did include an earlier version of Internet Explorer which is compatible – simply search for Internet Explorer on the start menu and connect as normal.

However, Windows 10 comes with a more efficient way to connect without using a web browser. This document provides details of how to configure your Windows 10 computer to access the school Remote Applications and Remote Desktop.

RemoteApp and Desktop Connection

Connecting via the RemoteApp and Desktop Connection method in Windows 10 provides a constant link to the school remote resources which listed in the start menu just like any other program. When you click on one of the RemoteApps or Remote Desktop your PC connects in the background and presents you with the application as if running a local program.

Important Points:

- This guide is application to Windows 10 only
- The address for the RemoteApp and Desktop is

<https://tsdesktop.titussaltschool.co.uk/RDWeb/Feed/webfeed.aspx>
- Login with your normal network username and password when prompted

RemoteApps and Remote Desktop in Windows 10



IT Operations
Titus Salt School
April 2016

Setting Up

- Access the Control Panel on your PC.
The easiest way to do this is to click on the start menu or in the Cortana bar and type in Control Panel. This will bring up a link to Control Panel as shown in Figure 1. Simply click the link to open.

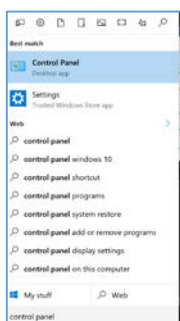


Figure 1 – Searching for Control Panel

- When the Control Panel opens, locate the RemoteApp and Desktop Connection- as shown in Figure 2 – and click to open.

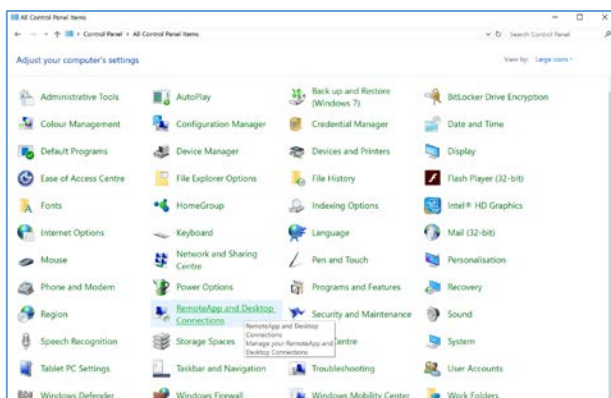


Figure 2 – Control Panel with RemoteApp and Desktop Connection highlighted

RemoteApps and Remote Desktop in Windows 10



IT Operations
Titus Salt School
April 2016

- When the RemoteApp and Desktop Connections configuration window opens, locate the **Access RemoteApp and desktops** link on the left pane – as shown in Figure 3 – and click to start the process.

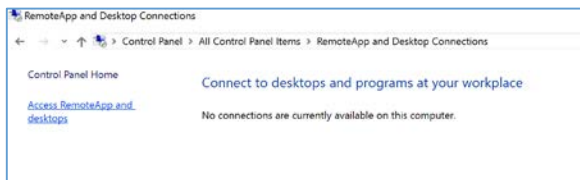


Figure 3 – link to begin configuration

- In the window which appears, you will be prompted to enter connection details. Type in the following then click **next**:

<https://tsdesktop.titussaltschool.co.uk/RDWeb/Feed/webfeed.aspx>

The screen should look like Figure 4, shown below

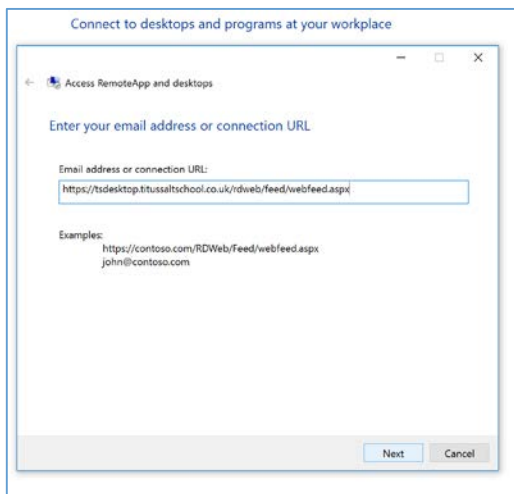


Figure 4 – address for connection

RemoteApps and Remote Desktop in Windows 10



IT Operations

Titus Salt School

April 2016

- When you have clicked next, the window will change and provide information regarding the connection – as shown below in Figure 5.

Click **next** to continue

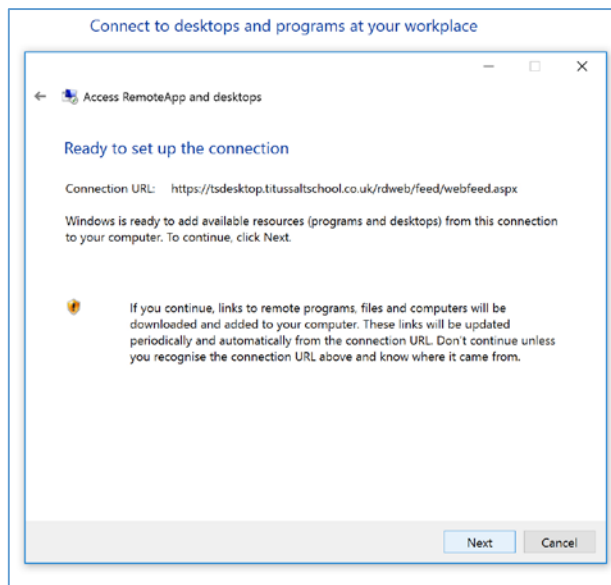


Figure 5 – connection details

RemoteApps and Remote Desktop in Windows 10



IT Operations
Titus Salt School
April 2016

- The connection will be added and your PC will attempt to connect to the remote site via your Internet connection as shown below in Figure 6.

If you receive any errors at this stage, please check your connection to the internet is working.

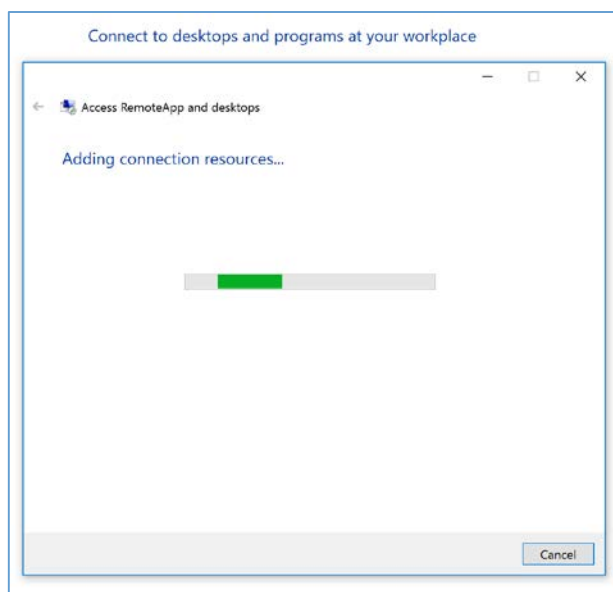


Figure 6 – adding the connection

RemoteApps and Remote Desktop in Windows 10



IT Operations

Titus Salt School

April 2016

- Once the connection to the school's remote system has been established, you will be prompted to enter your username and password.

Please make sure you put your full username (the same as your email address including the @titussaltschool.co.uk) as shown in figure 7.

Click the check box next to **Remember my credentials** – this will save your username and password.

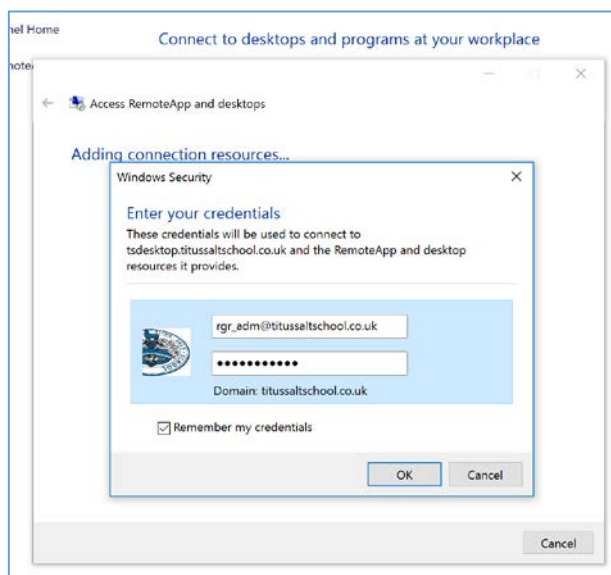


Figure 7 – entering your username and password

RemoteApps and Remote Desktop in Windows 10



IT Operations

Titus Salt School

April 2016

- Once your username and password have been successfully validated, Windows will configure all the RemoteApps and Remote Desktop and download the required details to your computer as shown below in Figure 8.

Click **Finish** to complete the set up.

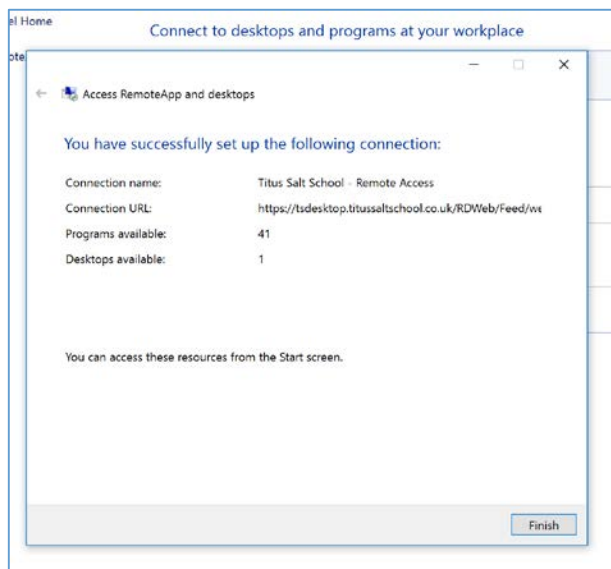


Figure 8 – successful connection

RemoteApps and Remote Desktop in Windows 10



IT Operations
Titus Salt School
April 2016

- The screen will now show you details of the connection along with the most recent update time and date and various other pieces of information.

You can now close this window (by clicking the x in the top right corner).

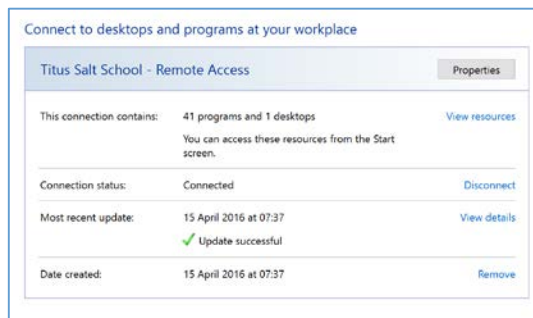


Figure 9 – successful connection details

RemoteApps and Remote Desktop in Windows 10



IT Operations
Titus Salt School
April 2016

- Now we have created the connection, we need to access them. Simply click on the **Start** menu and then select **All Apps**. Application are listed in alphabetical order, so navigate to the T section where you will find Titus Salt School – Remote and click on the entry to reveal the links underneath as shown in Figure 10 below.

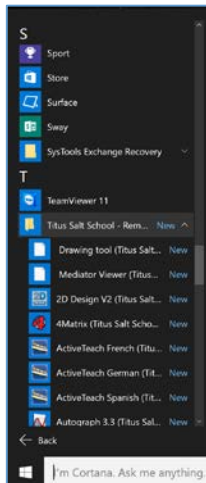


Figure 10 – Start menu entries for RemoteApps and Desktop

- To connect to the school Remote Desktop simply find the link for Remote Desktop and click.

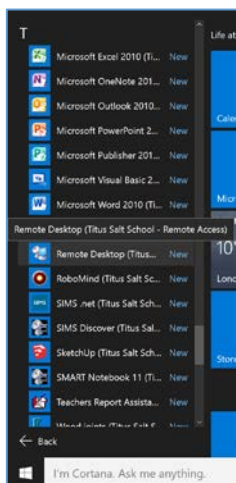


Figure 11 – Remote Desktop link on Start menu

RemoteApps and Remote Desktop in Windows 10



IT Operations
Titus Salt School
April 2016

- Your computer will then connect to the Remote Desktop servers and display the window shown in Figure 12. Put a tick in the box as shown and click **Connect** to start the session.

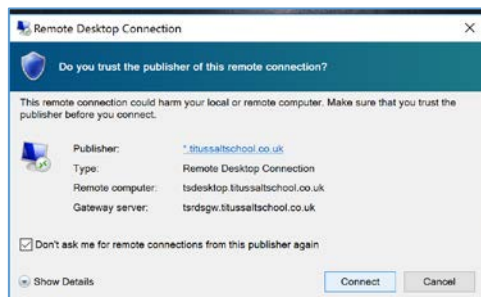


Figure 12 – Connect window for Remote Desktop.

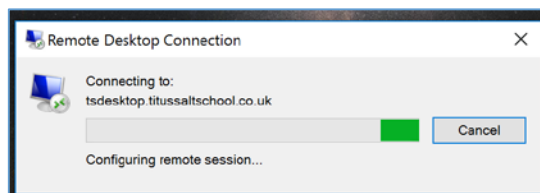


Figure 13 – Connection and configuration

RemoteApps and Remote Desktop in Windows 10



IT Operations
Titus Salt School
April 2016

- Once the connection is complete you will see the familiar screen shown in Figure 14, advising you of the school's Acceptable Use Policy.

Click OK to continue to the Remote Desktop shown in Figure 15



Figure 13 – AUP message



Figure 15 – Remote Desktop session